

CIVIL ENGINEERING DRAWING-I

| Course Code | Course Title | No. of Periods per Week | Total No. of Periods | Marks for Formative Assessment | Marks for Summative Assessment |
|-------------|-----------------------------|-------------------------|----------------------|--------------------------------|--------------------------------|
| C-306 | CIVIL ENGINEERING DRAWING-I | 04 | 60 | 40 | 60 |

**MODEL PAPER – BOARD DIPLOMA EXAMINATION,
(C-23)DCE—THIRD SEMESTER EXAMINATION
CIVIL ENGINEERING DRAWING- I (C-306)**

Time: 3 hours

Max. Marks: 60

PART – A

5 X 4 = 20

- Instructions:**
1. Answer *all* questions.
 2. Part – A need not be drawn to a scale.
 3. Any missing data may be assumed suitably.

1. Draw at the site plan of a residential building as per local bye-laws to plot of size 12 m x 18 m.
2. Draw the cross section of a load bearing wall and label the parts.
3. Draw the elevation of fully paneled door and label the parts.
4. Prepare Electric Layout for a single room of 4.0 m x 6.0 m with 300 mm wall thickness.
5. Draw the foundation plan of a single room 3.25 m x 4.75 m having wall thickness 380 mm and width of foundation 1100 mm.

- Instructions:**
1. Answer **all** questions.
 2. Any missing data may be assumed suitably..

6. Draw the following items to a scale of 1:50 for Fig.1

- | | |
|---------------------------|------|
| a) Fully Dimensioned Plan | 15 M |
| b) Section along A-A. | 10 M |

Specifications:

(i) Foundation:

a) Overall depth of foundation= 1000 mm

b) C.C. Bed (1:3:6) : 1000 mm x 300 mm

c) First Footing : R.R Masonry in CM (1: 6) : 1000 mm x 300 mm

d) Second Footing : R.R Masonry in CM(1: 6) : 1000 mm x 300 mm

(ii) Basement : R.R Masonry in CM(1: 6) : 450 mm x 600 mm

(iii) Super structure: Brick masonry CM(1: 6) : 300 mm thick and
Height 3000 mm.

(iv) Roof: R.C.C. (1:1.5:3) 120 mm thick.

*

(V) Lintels: On all wall openings 300 mm x 250 mm

(vi) Sunshades: On all external openings, projected lengths 700
mm.And 50mm uniform thickness.

(vii) Parapet wall: Brick masonry in CM (1:6) of 100 mm thick and

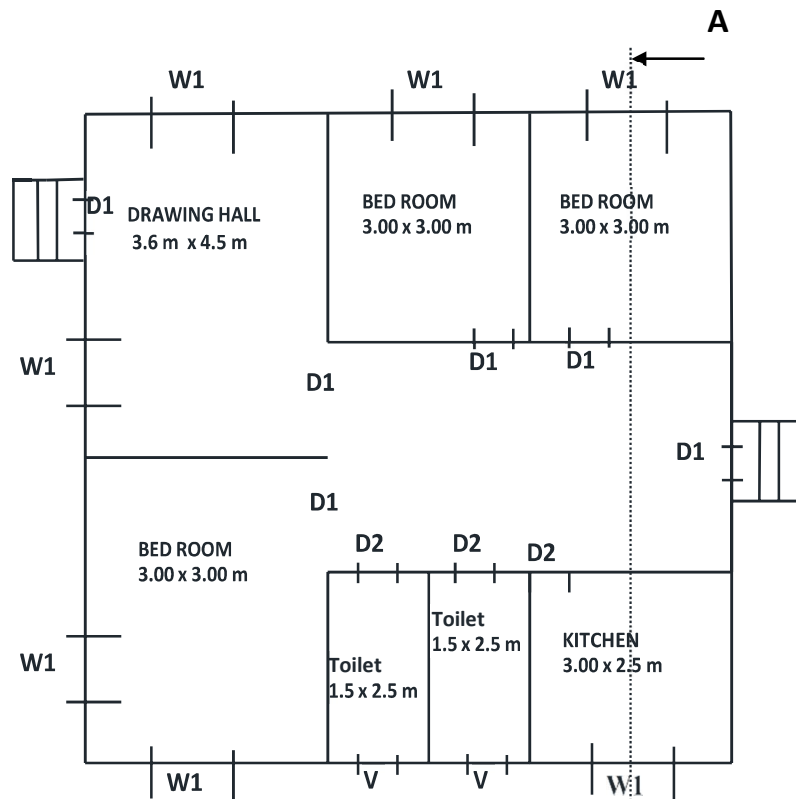
viii) (a) Doors: D1 : 1000 x 2000 mm ; D2 : 800 x 2000 mm

(b) Windows: W1: 1200 mm x 1200 mm; W2: 1000x 1200 mm

(c) Ventilators: V: 600 mm x 450 mm.

(ix) Flooring: C.C (1:2:4) 40 mm thick over C.C. (1:4:8) OF 100 mm Thick.

(x) Steps: Rise : 150 mm, Tread: 300 mm.



7. Draw the line diagram of an Apartment Plan of the Floor with 6 Units each
@ 90 to 120 sq.m. **15 m**

*